

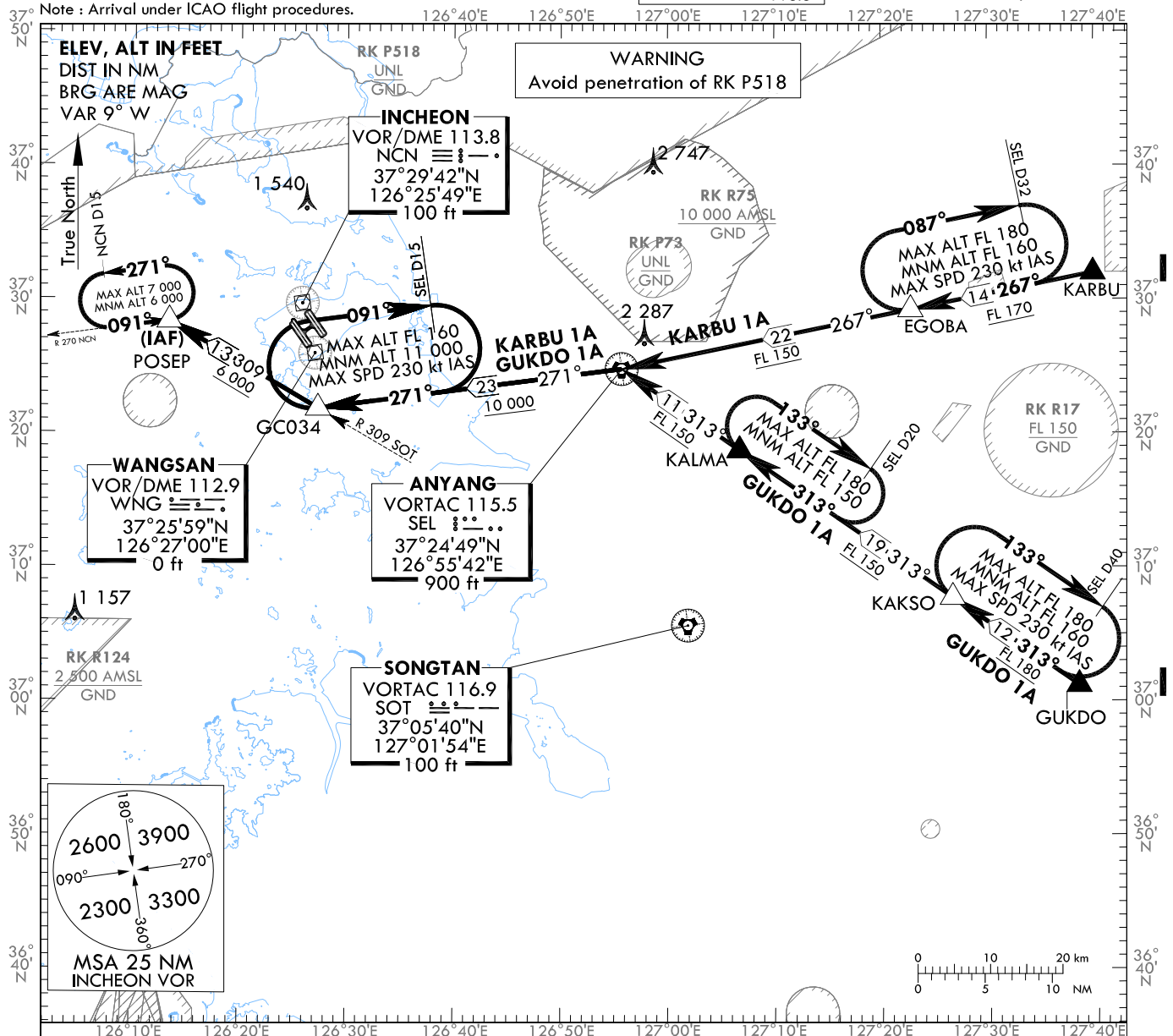
STANDARD ARRIVAL CHART  
INSTRUMENT (STAR) - ICAO

TRANSITION ALT 14 000  
TRANSITION LVL FL 140

SEOUL APP 119.75  
INCHEON TWR 121.35  
118.2  
118.8

SEOUL/Incheon Intl(RKSI)  
RWY 15L  
GUKDO 1A, KARBU 1A

Note : Arrival under ICAO flight procedures.



GENERAL INFORMATION

1. For profile descent with clearance "Descend via the (STAR name and number) arrival", pilots should commence descent after passing the First Fix/Waypoint of each arrival.
2. If unable to comply with flight restrictions, advise ATC for alternatives.
3. Maximum holding speed is 230 kt IAS at EGOBA, KAKSO, KALMA and GC034, 200 kt IAS at POSEP.

DESIGNATOR	FROM	ROUTE	DESCENT ALTITUDE
GUKDO ONE ALPHA	G585 /Y685	GUKDO - KAKSO - KALMA - SEL - GC034 - POSEP	At or above FL 180 by KAKSO, FL 150 by SEL, 10 000 ft by GC034, and 6 000 ft by POSEP
KARBU ONE ALPHA	G597 /Y697	KARBU - EGOBA - SEL - GC034 - POSEP	At or above FL 170 by EGOBA, FL 150 by SEL, 10 000 ft by GC034, and 6 000 ft by POSEP

Change : Information of reporting point(GUKDO, KARBU).

SEOUL/Incheon Intl(RKSI)

RWY 15L

GUKDO 1A, KARBU 1A

# AERONAUTICAL DATA TABULATION

## GUKDO 1A

Fix / Point		Coordinates	
GUKDO	R 133/D41 SEL	37°01'10.9"N	127°38'22.9"E
KAKSO	R 133/D30 SEL	37°07'44.6"N	127°26'37.4"E
KALMA	R 133/D11 SEL	37°18'44.9"N	127°06'44.8"E
SEL		37°24'49.0"N	126°55'42.1"E
GC034	R 309/D32 SOT	37°21'51.0"N	126°27'18.0"E
POSEP	R 271/D10 NCN	37°28'21.8"N	126°13'22.0"E

## KARBU 1A

Fix / Point		Coordinates	
KARBU	R 087/D36 SEL	37°31'59.0"N	127°39'52.0"E
EGOBA	R 087/D22 SEL	37°29'14.7"N	127°22'45.9"E
SEL		37°24'49.0"N	126°55'42.1"E
GC034	R 309/D32 SOT	37°21'51.0"N	126°27'18.0"E
POSEP	R 271/D10 NCN	37°28'21.8"N	126°13'22.0"E

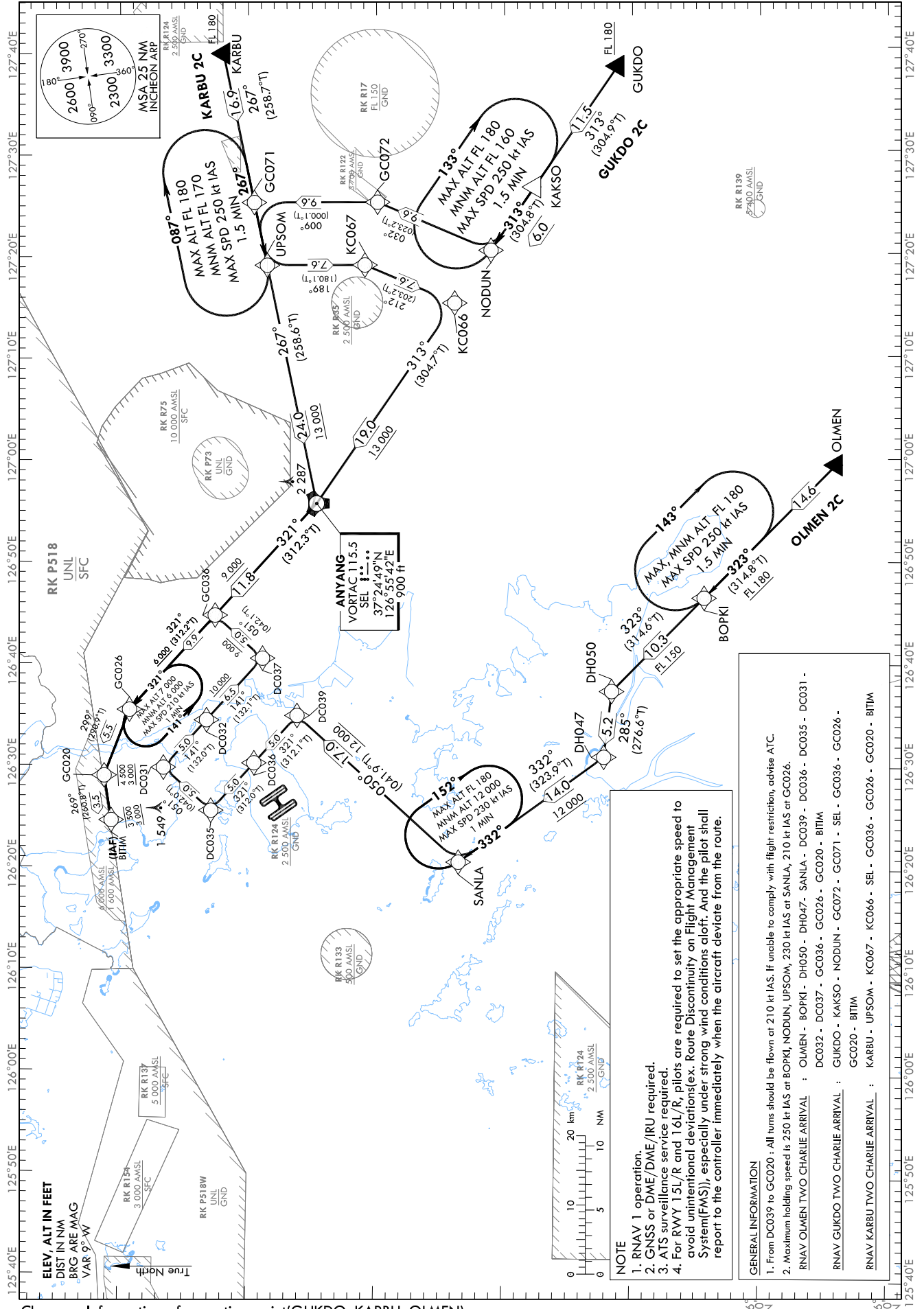
STANDARD ARRIVAL CHART  
INSTRUMENT (STAR) - ICAO

TRANSITION ALT 14 000  
TRANSITION LVL FL 140

SEOUL APP 119.75  
121.35  
INCHEON TWR 118.2  
118.8

SEOUL/Incheon Intl(RKSI)  
RWY 15L/R, RWY 16L/R  
RNAV OLMEN 2C  
RNAV GUKDO 2C, RNAV KARBU 2C

Note : Arrival under ICAO Flight Procedures.



Change : Information of reporting point(GUKDO, KARBU, OLMEN).

SEOUL/Incheon Intl(RKSI)  
RWY 15L/R, RWY 16L/R  
RNAV OLMEN 2C, RNAV GUKDO 2C

## AERONAUTICAL DATA TABULATION

Standard Instrument Arrival Procedure Coding Tables

## RNAV OLMEN 2C

Serial Number	Path Descriptor	Waypoint Identifier	Fly-over	Course/Track °M(°T)	Distance (NM)	Turn direction	Altitude (ft)	Speed (kt)	Coordinates	VPA/RDH	Navigation specification	Remarks
001	IF	OLMEN	-	-	-	-	-	-	36°44'13.4"N 126°59'27.6"E	-	RNAV 1	-
002	TF	BOPKI	-	323 (314.8)	14.6	-	+FL 180	-	36°54'31.8"N 126°46'30.1"E	-	RNAV 1	-
003	TF	DH050	-	323 (314.6)	10.3	-	+FL 150	-	37°01'44.4"N 126°37'23.0"E	-	RNAV 1	-
004	TF	DH047	-	285 (276.6)	5.2	-	-	-	37°02'20.0"N 126°30'58.0"E	-	RNAV 1	-
005	TF	SANLA	-	332 (323.9)	14.0	-	+12 000	-	37°13'39.5"N 126°20'39.0"E	-	RNAV 1	-
006	TF	DC039	-	050 (041.9)	17.0	-	+12 000	@210	37°26'19.1"N 126°34'55.2"E	-	RNAV 1	-
007	TF	DC036	-	321 (312.1)	5.0	-	-	@210	37°29'40.2"N 126°30'15.4"E	-	RNAV 1	-
008	TF	DC035	-	321 (312.0)	5.0	-	-	@210	37°33'01.2"N 126°25'35.1"E	-	RNAV 1	-
009	TF	DC031	-	051 (042.0)	5.0	-	-	@210	37°36'44.4"N 126°29'47.6"E	-	RNAV 1	-
010	TF	DC032	-	141 (132.0)	5.0	-	-	@210	37°33'23.3"N 126°34'27.9"E	-	RNAV 1	-
011	TF	DC037	-	141 (132.1)	6.5	-	+10 000	@210	37°29'01.6"N 126°40'31.7"E	-	RNAV 1	-
012	TF	GC036	-	051 (042.1)	5.0	-	+9 000	@210	37°32'44.3"N 126°44'44.7"E	-	RNAV 1	-
013	TF	GC026	-	321 (312.2)	9.9	-	+6 000	@210	37°39'24.5"N 126°35'28.2"E	-	RNAV 1	-
014	TF	GC020	-	299 (290.9)	5.5	-	-4 500 +3 000	@210	37°41'22.0"N 126°28'59.8"E	-	RNAV 1	-
015	TF	BITIM	-	269 (260.8)	3.5	-	-3 500 +3 000	-	37°40'48.0"N 126°24'36.1"E	-	RNAV 1	IAF

## RNAV GUKDO 2C

Serial Number	Path Descriptor	Waypoint Identifier	Fly-over	Course/Track °M(°T)	Distance (NM)	Turn direction	Altitude (ft)	Speed (kt)	Coordinates	VPA/RDH	Navigation specification	Remarks
001	IF	GUKDO	-	-	-	-	+FL 180	-	37°01'10.9"N 127°38'22.9"E	-	RNAV 1	-
002	TF	KAKSO	-	313 (304.9)	11.5	-	-	-	37°07'44.6"N 127°26'37.4"E	-	RNAV 1	-
003	TF	NODUN	-	313 (304.8)	6.0	-	-	-	37°11'10.1"N 127°20'27.5"E	-	RNAV 1	-
004	TF	GC072	-	032 (023.2)	9.6	-	-	-	37°20'01.0"N 127°25'12.2"E	-	RNAV 1	-
005	TF	GC071	-	009 (000.1)	9.6	-	-	-	37°29'38.5"N 127°25'13.7"E	-	RNAV 1	-
006	TF	SEL	-	267 (258.6)	24.0	-	+13 000	-	37°24'49.0"N 126°55'42.1"E	-	RNAV 1	-
007	TF	GC036	-	321 (312.3)	11.8	-	+9 000	@210	37°32'44.3"N 126°44'44.7"E	-	RNAV 1	-
008	TF	GC026	-	321 (312.2)	9.9	-	+6 000	@210	37°39'24.5"N 126°35'28.2"E	-	RNAV 1	-
009	TF	GC020	-	299 (290.9)	5.5	-	-4 500 +3 000	@210	37°41'22.0"N 126°28'59.8"E	-	RNAV 1	-
010	TF	BITIM	-	269 (260.8)	3.5	-	-3 500 +3 000	-	37°40'48.0"N 126°24'36.1"E	-	RNAV 1	IAF

SEOUL/Incheon Intl(RKSI)  
RWY 15L/R, RWY 16L/R  
RNAV KARBU 2C

## AERONAUTICAL DATA TABULATION

Standard Instrument Arrival Procedure Coding Tables

RNAV KARBU 2C										
Serial Number	Path Descriptor	Waypoint Identifier	Fly-over	Course/Track °M(°T)	Distance (NM)	Turn direction	Altitude (ft)	Speed (kt)	Coordinates	VPA/RDH
001	IF	KARBU	-	-	-	-	+FL 180	-	37°31'59.0"N 127°39'52.0"E	-
002	TF	UPSOM	-	267 (258.7)	16.9	-	-	-	37°28'38.8"N 127°19'04.3"E	-
003	TF	KC067	-	189 (180.1)	7.6	-	-	-	37°21'01.5"N 127°19'03.7"E	-
004	TF	KC066	-	212 (203.2)	7.6	-	-	-	37°14'01.2"N 127°15'18.8"E	-
005	TF	SEL	-	313 (304.7)	19.0	-	+13 000	-	37°24'49.0"N 126°55'42.1"E	-
006	TF	GC036	-	321 (312.3)	11.8	-	+9 000	@210	37°32'44.3"N 126°44'44.7"E	-
007	TF	GC026	-	321 (312.2)	9.9	-	+6 000	@210	37°39'24.5"N 126°35'28.2"E	-
008	TF	GC020	-	299 (290.9)	5.5	-	-4 500 +3 000	@210	37°41'22.0"N 126°28'59.8"E	-
009	TF	BITIM	-	269 (260.8)	3.5	-	-3 500 +3 000	-	37°40'48.0"N 126°24'36.1"E	-
										IAF

## HOLDING PROCEDURE

Holding Identification	Path Descriptor	Waypoint Identifier	Fly-over	Course/Track °M(°T)	Time (min)	Turn direction	Altitude (ft)	Speed (kt)	Coordinates	VPA/RDH	Navigation specification	Remarks
RNAV OLMEN 2C	-	BOPKI	Y	323 (314.8)	1.5	R	@FL 180	-250	36°54'31.8"N 126°46'30.1"E	-	RNAV 1	-
RNAV OLMEN 2C	-	SANLA	Y	332 (323.9)	1.0	R	-FL 180 +12 000	-230	37°13'39.5"N 126°20'39.0"E	-	RNAV 1	-
RNAV GUKDO 2C	-	NODUN	Y	313 (304.8)	1.5	R	-FL 180 +FL 160	-250	37°11'10.1"N 127°20'27.5"E	-	RNAV 1	-
RNAV KARBU 2C	-	UPSOM	Y	267 (258.7)	1.5	R	-FL 180 +FL 170	-250	37°28'38.8"N 127°19'04.3"E	-	RNAV 1	-
RNAV OLMEN 2C RNAV GUKDO 2C RNAV KARBU 2C	-	GC026	Y	321 (312.2)	1.0	L	-7 000 +6 000	-210	37°39'24.5"N 126°35'28.2"E	-	RNAV 1	-

Change : Information of ALT restriction for holding procedure.

**INTENTIONALLY**

**LEFT**

**BLANK**

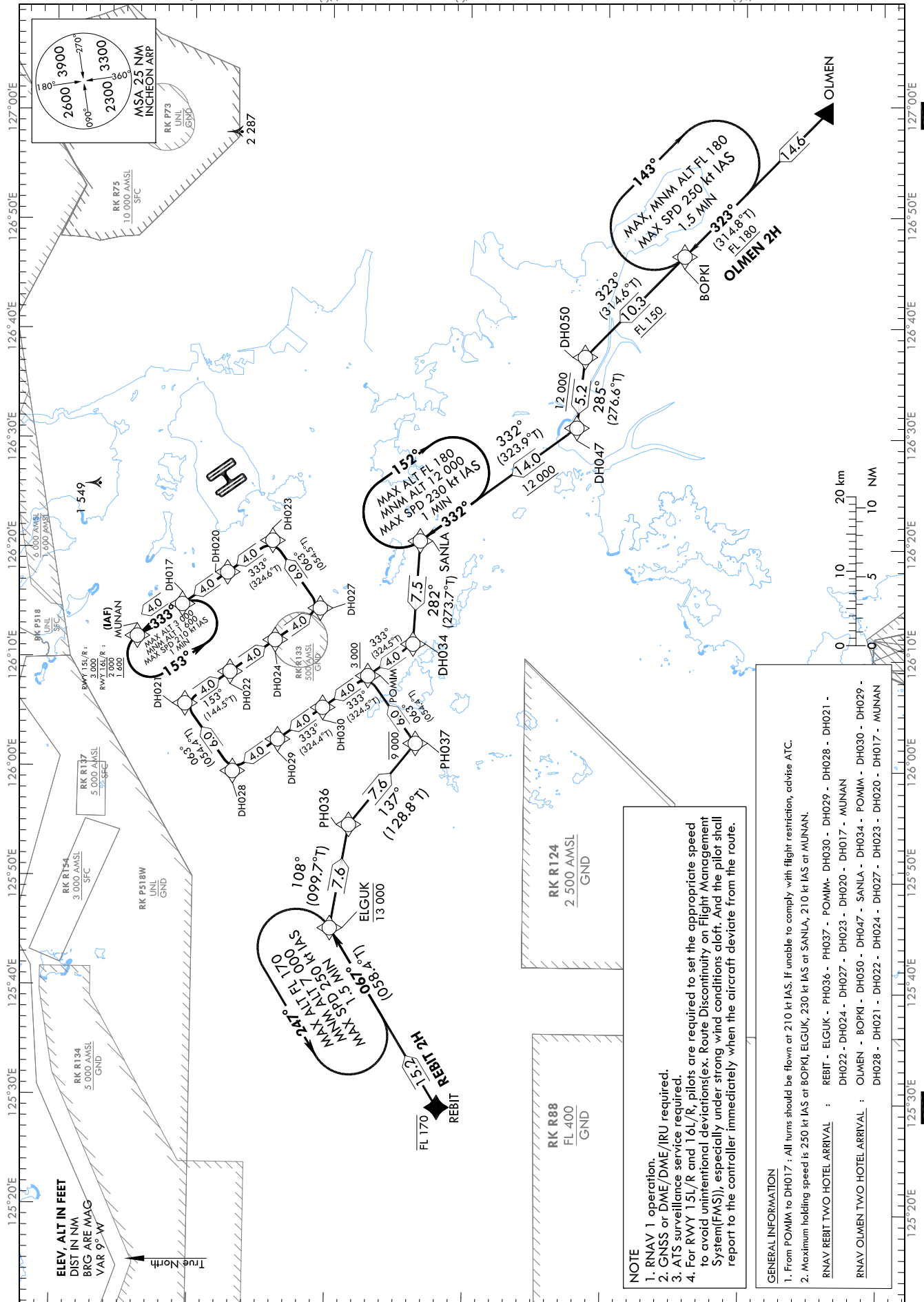
STANDARD ARRIVAL CHART  
INSTRUMENT (STAR) - ICAO

TRANSITION ALT 14 000  
TRANSITION LVL FL 140

SEOUL APP 119.75  
INCHEON TWR 121.35  
118.2  
118.8

SEOUL/Incheon Intl(RKSI)  
RWY 15L/R, RWY 16L/R  
RNAV REBIT 2H  
RNAV OLMEN 2H

Note : Arrival under ICAO Flight Procedures.



Change : Information of reporting point(REBIT, OLMEN).

SEOUL/Incheon Intl(RKSI)  
RWY 15L/R, RWY 16L/R  
RNAV REBIT 2H

## AERONAUTICAL DATA TABULATION

Standard Instrument Arrival Procedure Coding Tables

RNAV REBIT 2H												
Serial Number	Path Descriptor	Waypoint Identifier	Fly-over	Course/Track °M(°T)	Distance (NM)	Turn direction	Altitude (ft)	Speed (kt)	Coordinates	VPA/RDH	Navigation specification	Remarks
001	IF	REBIT	-	-	-	-	-FL 170	-	37°12'03.0"N 125°29'12.7"E	-	RNAV 1	-
002	TF	ELGUK	-	067 (058.4)	15.2	-	-13 000	-	37°19'59.4"N 125°45'24.7"E	-	RNAV 1	-
003	TF	PH036	-	108 (099.7)	7.6	-	-	-	37°18'41.6"N 125°54'49.4"E	-	RNAV 1	-
004	TF	PH037	-	137 (128.8)	7.6	-	-9 000	-	37°13'54.3"N 126°02'15.2"E	-	RNAV 1	-
005	TF	POMUM	-	063 (054.4)	6.0	-	+3 000	@210	37°17'23.8"N 126°08'22.1"E	-	RNAV 1	-
006	TF	DH030	-	333 (324.5)	4.0	-	-	@210	37°20'39.4"N 126°05'27.2"E	-	RNAV 1	-
007	TF	DH029	-	333 (324.4)	4.0	-	-	@210	37°23'54.8"N 126°02'32.1"E	-	RNAV 1	-
008	TF	DH028	-	333 (324.4)	4.0	-	-	@210	37°27'10.2"N 125°59'36.8"E	-	RNAV 1	-
009	TF	DH021	-	063 (054.4)	6.0	-	-	@210	37°30'39.9"N 126°03'44.6"E	-	RNAV 1	-
010	TF	DH022	-	153 (144.5)	4.0	-	-	@210	37°27'24.4"N 126°08'39.8"E	-	RNAV 1	-
011	TF	DH024	-	153 (144.5)	4.0	-	-	@210	37°24'08.8"N 126°11'34.8"E	-	RNAV 1	-
012	TF	DH027	-	153 (144.5)	4.0	-	-	@210	37°20'53.1"N 126°14'29.5"E	-	RNAV 1	-
013	TF	DH023	-	063 (054.5)	6.0	-	-	@210	37°24'22.0"N 126°20'37.5"E	-	RNAV 1	-
014	TF	DH020	-	333 (324.6)	4.0	-	-	@210	37°27'37.8"N 126°17'42.9"E	-	RNAV 1	-
015	TF	DH017	-	333 (324.6)	4.0	-	-	@210	37°30'53.6"N 126°14'48.1"E	-	RNAV 1	-
016	TF	MUNAN	-	333 (324.5)	4.0	-	-	-	37°34'09.3"N 126°11'53.0"E	-	RNAV 1	IAF



SEOUL/Incheon Intl(RKSI)  
RWY 15L/R, RWY 16L/R  
RNAV OLMEN 2H

## AERONAUTICAL DATA TABULATION

Standard Instrument Arrival Procedure Coding Tables

RNAV OLMEN 2H												
Serial Number	Path Descriptor	Waypoint Identifier	Fly-over	Course/Track °M(°T)	Distance (NM)	Turn direction	Altitude (ft)	Speed (kt)	Coordinates	VPA/ RDH	Navigation specification	Remarks
001	IF	OLMEN	-	-	-	-	-	-	36°44'13.4"N 126°59'27.6"E	-	RNAV 1	-
002	TF	BOPKI	-	323 (314.8)	14.6	-	+FL 180	-	36°54'31.8"N 126°46'30.1"E	-	RNAV 1	-
003	TF	DH050	-	323 (314.6)	10.3	-	+FL 150	-	37°01'44.4"N 126°37'23.0"E	-	RNAV 1	-
004	TF	DH047	-	285 (276.6)	5.2	-	+12 000	-	37°02'20.0"N 126°30'58.0"E	-	RNAV 1	-
005	TF	SANLA	-	332 (323.9)	14.0	-	+12 000	-	37°13'39.5"N 126°20'39.0"E	-	RNAV 1	-
006	TF	DH034	-	282 (273.7)	7.5	-	-	-	37°14'08.2"N 126°11'16.7"E	-	RNAV 1	-
007	TF	POMIM	-	333 (324.5)	4.0	-	+3 000	@210	37°17'23.8"N 126°08'22.1"E	-	RNAV 1	-
008	TF	DH030	-	333 (324.5)	4.0	-	-	@210	37°20'39.4"N 126°05'27.2"E	-	RNAV 1	-
009	TF	DH029	-	333 (324.4)	4.0	-	-	@210	37°23'54.8"N 126°02'32.1"E	-	RNAV 1	-
010	TF	DH028	-	333 (324.4)	4.0	-	-	@210	37°27'10.2"N 125°59'36.8"E	-	RNAV 1	-
011	TF	DH021	-	063 (054.4)	6.0	-	-	@210	37°30'39.9"N 126°05'44.6"E	-	RNAV 1	-
012	TF	DH022	-	153 (144.5)	4.0	-	-	@210	37°27'24.4"N 126°08'39.8"E	-	RNAV 1	-
013	TF	DH024	-	153 (144.5)	4.0	-	-	@210	37°24'08.8"N 126°11'34.8"E	-	RNAV 1	-
014	TF	DH027	-	153 (144.5)	4.0	-	-	@210	37°20'53.1"N 126°14'29.5"E	-	RNAV 1	-
015	TF	DH023	-	063 (054.5)	6.0	-	-	@210	37°24'22.0"N 126°20'37.5"E	-	RNAV 1	-
016	TF	DH020	-	333 (324.6)	4.0	-	-	@210	37°27'37.8"N 126°17'42.9"E	-	RNAV 1	-
017	TF	DH017	-	333 (324.6)	4.0	-	-	@210	37°30'53.6"N 126°14'48.1"E	-	RNAV 1	-
018	TF	MUNAN	-	333 (324.5)	4.0	-	+3 000 for RWY 15 -2 000 +1 600 for RWY 16	-	37°34'09.3"N 126°11'53.0"E	-	RNAV 1	IAF

## HOLDING PROCEDURE

Holding Identification	Path Descriptor	Waypoint Identifier	Fly-over	Course/Track °M(°T)	Time (min)	Turn direction	Altitude (ft)	Speed (kt)	Coordinates	VPA/ RDH	Navigation specification	Remarks
RNAV REBIT 2H	-	ELGUK	Y	067 (058.4)	1.5	L	-FL 170 +7 000	-250	37°19'59.4"N 125°45'24.7"E	-	RNAV 1	-
RNAV OLMEN 2H	-	BOPKI	Y	323 (314.8)	1.5	R	@FL 180	-250	36°54'31.8"N 126°46'30.1"E	-	RNAV 1	-
RNAV OLMEN 2H	-	SANLA	Y	332 (323.9)	1.0	R	-FL 180 +12 000	-230	37°13'39.5"N 126°20'39.0"E	-	RNAV 1	-
RNAV REBIT 2H RNAV OLMEN 2H	-	MUNAN	Y	333 (324.5)	1.0	L	-3 000 +1 600	-210	37°34'09.3"N 126°11'53.0"E	-	RNAV 1	-

Change : Information of ALT restriction for holding procedure.

**INTENTIONALLY**

**LEFT**

**BLANK**

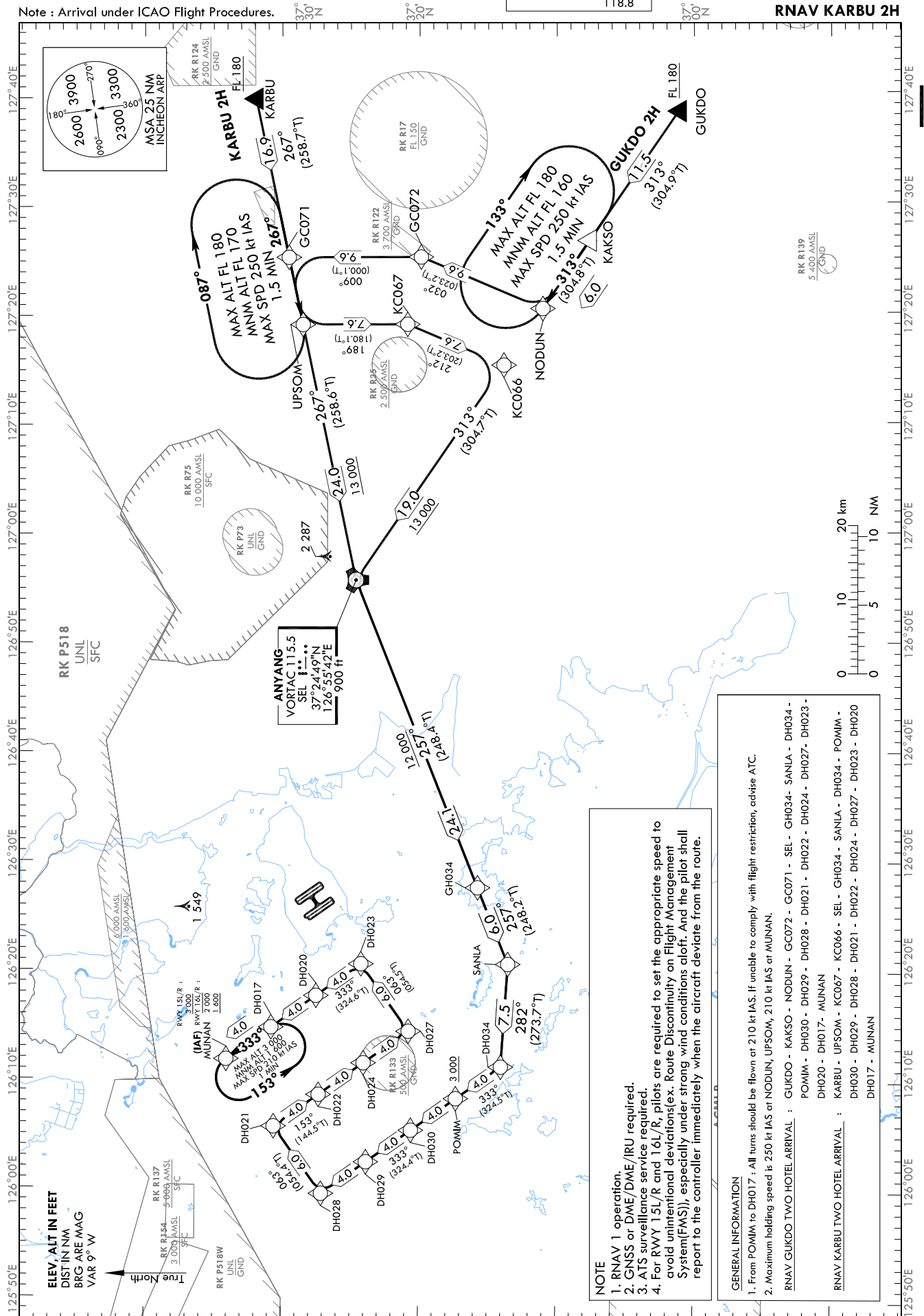
STANDARD ARRIVAL CHART  
INSTRUMENT (STAR) - ICAO

TRANSITION ALT 14 000  
TRANSITION LVL FL 140

SEOUL APP 119.75  
INCHEON TWR 121.35  
118.2  
118.8

SEOUL/Incheon Intl(RKSI)  
RWY 15L/R, RWY 16L/R  
RNAV GUKDO 2H  
RNAV KARBU 2H

Note : Arrival under ICAO Flight Procedures.



Change : Information of reporting point(GUKDO, KARBU).

SEOUL/Incheon Intl(RKSI)  
RWY 15L/R, RWY 16L/R  
RNAV GUKDO 2H

## AERONAUTICAL DATA TABULATION

Standard Instrument Arrival Procedure Coding Tables

RNAV GUKDO 2H												
Serial Number	Path Descriptor	Waypoint Identifier	Fly-over	Course/Track °M(°T)	Distance (NM)	Turn direction	Altitude (ft)	Speed (kt)	Coordinates	VPA/ RDH	Navigation specification	Remarks
001	IF	GUKDO	-	-	-	-	+FL 180	-	37°01'10.9"N 127°38'22.9"E	-	RNAV 1	-
002	TF	KAKSO	-	313 (304.9)	11.5	-	-	-	37°07'44.6"N 127°26'37.4"E	-	RNAV 1	-
003	TF	NODUN	-	313 (304.8)	6.0	-	-	-	37°11'10.1"N 127°20'27.5"E	-	RNAV 1	-
004	TF	GC072	-	032 (023.2)	9.6	-	-	-	37°20'01.0"N 127°25'12.2"E	-	RNAV 1	-
005	TF	GC071	-	009 (000.1)	9.6	-	-	-	37°29'38.5"N 127°25'13.7"E	-	RNAV 1	-
006	TF	SEL	-	267 (258.6)	24.0	-	+13 000	-	37°24'49.0"N 126°55'42.1"E	-	RNAV 1	-
007	TF	GH034	-	257 (248.4)	24.1	-	+12 000	-	37°15'53.8"N 126°27'37.5"E	-	RNAV 1	-
008	TF	SANLA	-	257 (248.2)	6.0	-	-	-	37°13'39.5"N 126°20'39.0"E	-	RNAV 1	-
009	TF	DH034	-	282 (273.7)	7.5	-	-	-	37°14'08.2"N 126°11'16.7"E	-	RNAV 1	-
010	TF	POMIM	-	333 (324.5)	4.0	-	+3 000	@210	37°17'23.8"N 126°08'22.1"E	-	RNAV 1	-
011	TF	DH030	-	333 (324.5)	4.0	-	-	@210	37°20'39.4"N 126°05'27.2"E	-	RNAV 1	-
012	TF	DH029	-	333 (324.4)	4.0	-	-	@210	37°23'54.8"N 126°02'32.1"E	-	RNAV 1	-
013	TF	DH028	-	333 (324.4)	4.0	-	-	@210	37°27'10.2"N 125°59'36.8"E	-	RNAV 1	-
014	TF	DH021	-	063 (054.4)	6.0	-	-	@210	37°30'39.9"N 126°05'44.6"E	-	RNAV 1	-
015	TF	DH022	-	153 (144.5)	4.0	-	-	@210	37°27'24.4"N 126°08'39.8"E	-	RNAV 1	-
016	TF	DH024	-	153 (144.5)	4.0	-	-	@210	37°24'08.8"N 126°11'34.8"E	-	RNAV 1	-
017	TF	DH027	-	153 (144.5)	4.0	-	-	@210	37°20'53.1"N 126°14'29.5"E	-	RNAV 1	-
018	TF	DH023	-	063 (054.5)	6.0	-	-	@210	37°24'22.0"N 126°20'37.5"E	-	RNAV 1	-
019	TF	DH020	-	333 (324.6)	4.0	-	-	@210	37°27'37.8"N 126°17'42.9"E	-	RNAV 1	-
020	TF	DH017	-	333 (324.6)	4.0	-	-	@210	37°30'53.6"N 126°14'48.1"E	-	RNAV 1	-
021	TF	MUNAN	-	333 (324.5)	4.0	-	+3 000 for RWY 15 -2 000 +1 600 for RWY 16	-	37°34'09.3"N 126°11'53.0"E	-	RNAV 1	IAF

SEOUL/Incheon Intl(RKSI)  
RWY 15L/R, RWY 16L/R  
RNAV KARBU 2H

## AERONAUTICAL DATA TABULATION

Standard Instrument Arrival Procedure Coding Tables

RNAV KARBU 2H		Waypoint Identifier	Fly-over	Course/Track °M(°T)	Distance (NM)	Turn direction	Altitude (ft)	Speed (kt)	Coordinates	VPA/ RDH	Navigation specification	Remarks
Serial Number	Path Descriptor											
001	IF	KARBU	-	-	-	-	+FL 180	-	37°31'59.0"N 127°39'52.0"E	-	RNAV 1	-
002	TF	UPSOM	-	267 (258.7)	16.9	-	-	-	37°28'38.8"N 127°19'04.3"E	-	RNAV 1	-
003	TF	KC067	-	189 (180.1)	7.6	-	-	-	37°21'01.5"N 127°19'03.7"E	-	RNAV 1	-
004	TF	KC066	-	212 (203.2)	7.6	-	-	-	37°14'01.2"N 127°15'18.8"E	-	RNAV 1	-
005	TF	SEL	-	313 (304.7)	19.0	-	+13 000	-	37°24'49.0"N 126°55'42.1"E	-	RNAV 1	-
006	TF	GH034	-	257 (248.4)	24.1	-	+12 000	-	37°15'53.8"N 126°27'37.5"E	-	RNAV 1	-
007	TF	SANLA	-	257 (248.2)	6.0	-	-	-	37°13'39.5"N 126°20'39.0"E	-	RNAV 1	-
008	TF	DH034	-	282 (273.7)	7.5	-	-	-	37°14'08.2"N 126°11'16.7"E	-	RNAV 1	-
009	TF	POMIM	-	333 (324.5)	4.0	-	+3 000	@210	37°17'23.8"N 126°08'22.1"E	-	RNAV 1	-
010	TF	DH030	-	333 (324.5)	4.0	-	-	@210	37°20'39.4"N 126°03'27.2"E	-	RNAV 1	-
011	TF	DH029	-	333 (324.4)	4.0	-	-	@210	37°23'54.8"N 126°02'32.1"E	-	RNAV 1	-
012	TF	DH028	-	333 (324.4)	4.0	-	-	@210	37°27'10.2"N 125°59'36.8"E	-	RNAV 1	-
013	TF	DH021	-	063 (054.4)	6.0	-	-	@210	37°30'39.9"N 126°05'44.6"E	-	RNAV 1	-
014	TF	DH022	-	153 (144.5)	4.0	-	-	@210	37°27'24.4"N 126°08'39.8"E	-	RNAV 1	-
015	TF	DH024	-	153 (144.5)	4.0	-	-	@210	37°24'08.8"N 126°11'34.8"E	-	RNAV 1	-
016	TF	DH027	-	153 (144.5)	4.0	-	-	@210	37°20'53.1"N 126°14'29.5"E	-	RNAV 1	-
017	TF	DH023	-	063 (054.5)	6.0	-	-	@210	37°24'22.0"N 126°20'37.5"E	-	RNAV 1	-
018	TF	DH020	-	333 (324.6)	4.0	-	-	@210	37°27'37.8"N 126°17'42.9"E	-	RNAV 1	-
019	TF	DH017	-	333 (324.6)	4.0	-	-	@210	37°30'53.6"N 126°14'48.1"E	-	RNAV 1	-
020	TF	MUNAN	-	333 (324.5)	4.0	-	+3 000 for RWY 15 -2 000 +1 600 for RWY 16	-	37°34'09.3"N 126°11'53.0"E	-	RNAV 1	IAF

HOLDING PROCEDURE

Holding Identification	Path Descriptor	Waypoint Identifier	Fly-over	Course/Track °M(°T)	Time (min)	Turn direction	Altitude (ft)	Speed (kt)	Coordinates	VPA/ RDH	Navigation specification	Remarks
RNAV GUKDO 2H	-	NODUN	Y	313 (304.8)	1.5	R	-FL 180 +FL 160	-250	37°11'10.1"N 127°20'27.5"E	-	RNAV 1	-
RNAV KARBU 2H	-	UPSOM	Y	267 (258.7)	1.5	R	-FL 180 +FL 170	-250	37°28'38.8"N 127°19'04.3"E	-	RNAV 1	-
RNAV GUKDO 2H RNAV KARBU 2H	-	MUNAN	Y	333 (324.5)	1.0	L	-3 000 +1 600	-210	37°34'09.3"N 126°11'53.0"E	-	RNAV 1	-

Change : Information of ALT restriction for holding procedure.

**INTENTIONALLY**

**LEFT**

**BLANK**

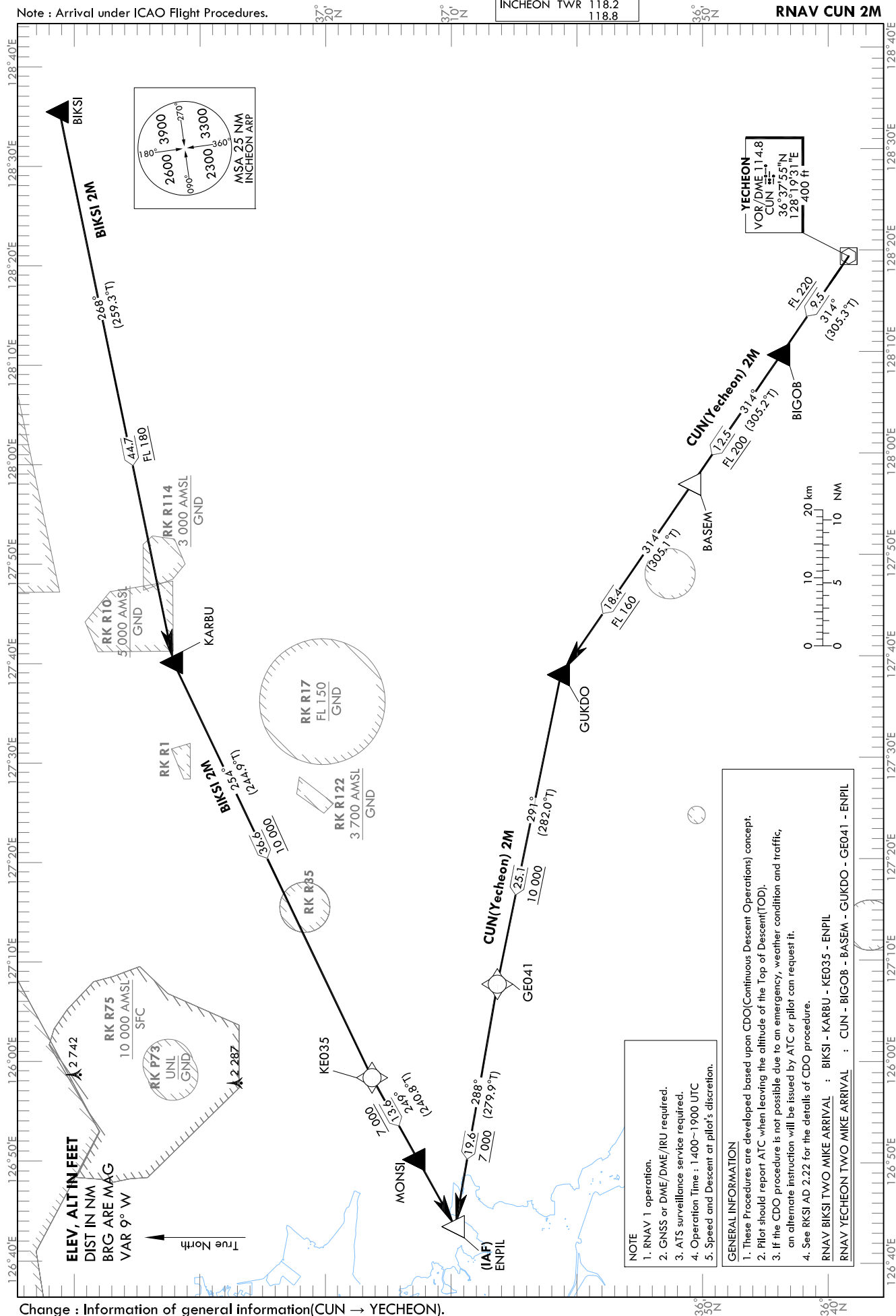
STANDARD ARRIVAL CHART  
INSTRUMENT (STAR) - ICAO

TRANSITION ALT 14 000  
TRANSITION LVL FL 140

DAEGU ACC 134.175  
120.575  
SEOUL APP 119.75  
121.35  
INCHEON TWR 118.2  
118.8

SEOUL/Incheon Int'l(RKSI)  
RWY 33L/R, RWY 34L/R  
RNAV BIKSI 2M  
RNAV CUN 2M

Note : Arrival under ICAO Flight Procedures.



Change : Information of general information(CUN → YECHON).

SEOUL/Incheon Intl(RKSI)  
RWY 33L/R RWY 34L/R  
RNAV BIKSI 2M, RNAV CUN 2M

## AERONAUTICAL DATA TABULATION

## Standard Instrument Arrival Procedure Coding Tables

RNAV BIKSI 2M

Serial Number	Path Descriptor	Waypoint Identifier	Fly-over	Course/Track °M(°T)	Distance (NM)	Turn direction	Altitude (ft)	Speed (kt)	Coordinates	VPA/TCH	Navigation specification	Remarks
001	IF	BIKSI	-	-	-	-	-	-	37°40'32.0"N 128°35'04.0"E	-	RNAV 1	-
002	TF	KARBU	-	268 (259.3)	44.7	-	+FL 180	-	37°31'59.0"N 127°39'52.0"E	-	RNAV 1	-
003	TF	KE035	-	254 (244.9)	36.6	-	+10 000	-	37°16'18.0"N 126°58'23.2"E	-	RNAV 1	-
004	TF	ENPIL	-	249 (240.8)	13.6	-	+7 000	-	37°09'39.0"N 126°43'34.0"E	-	RNAV 1	IAF

RNAV CUN 2M

Serial Number	Path Descriptor	Waypoint Identifier	Fly-over	Course/Track °M(°T)	Distance (NM)	Turn direction	Altitude (ft)	Speed (kt)	Coordinates	VPA/TCH	Navigation specification	Remarks
001	IF	CUN	-	-	-	-	-	-	36°37'55.3"N 128°19'31.5"E	-	RNAV 1	-
002	TF	BIGOB	-	314 (305.3)	9.5	-	+FL 220	-	36°43'25.4"N 128°09'52.0"E	-	RNAV 1	-
003	TF	BASEM	-	314 (305.2)	12.5	-	+FL 200	-	36°50'37.2"N 127°57'09.9"E	-	RNAV 1	-
004	TF	GUKDO	-	314 (305.1)	18.4	-	+FL 160	-	37°01'10.9"N 127°38'22.9"E	-	RNAV 1	-
005	TF	GE041	-	291 (282.0)	25.1	-	+10 000	-	37°06'19.6"N 127°07'40.9"E	-	RNAV 1	-
006	TF	ENPIL	-	288 (279.9)	19.6	-	+7 000	-	37°09'39.0"N 126°43'34.0"E	-	RNAV 1	IAF



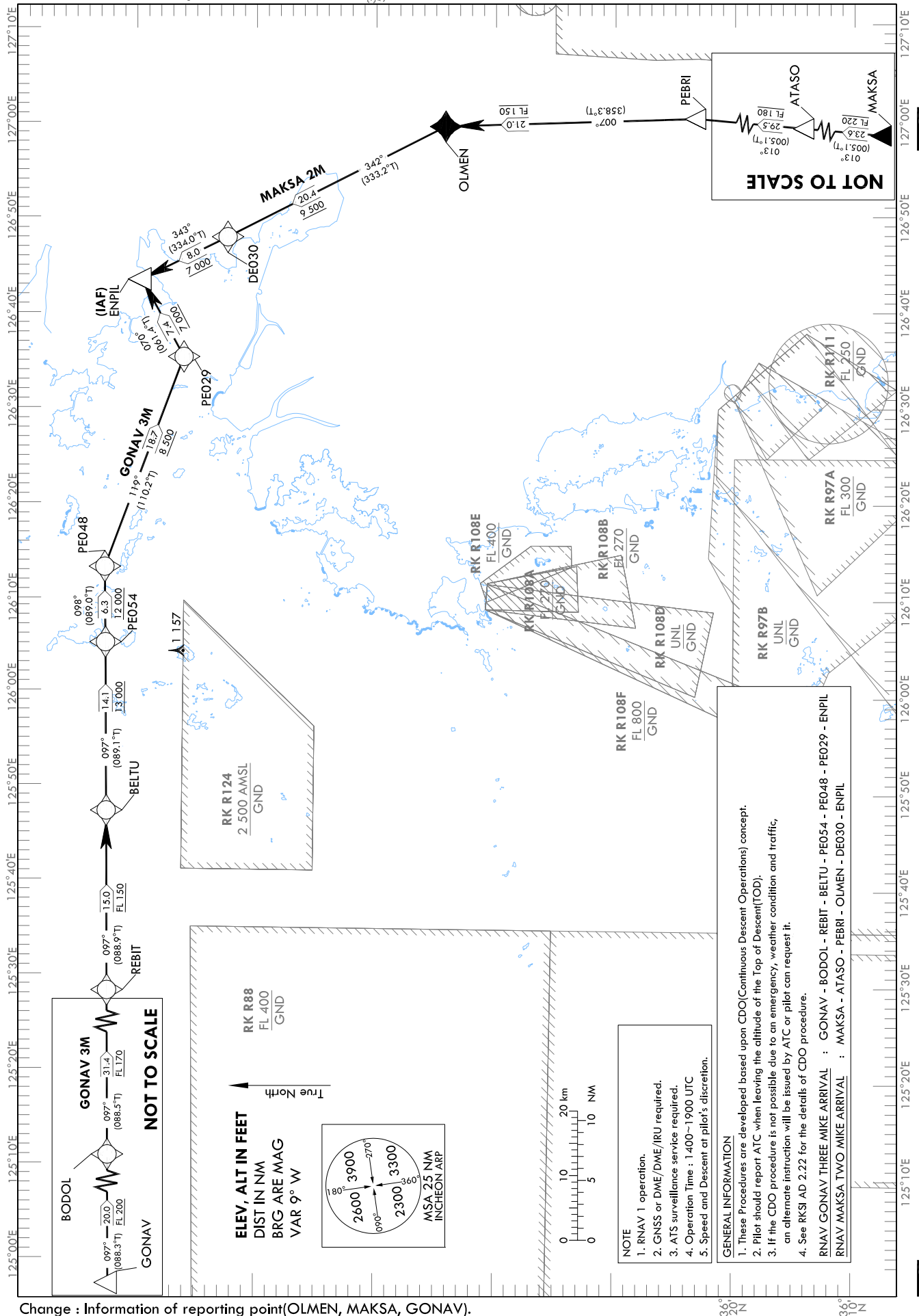
STANDARD ARRIVAL CHART  
INSTRUMENT (STAR) - ICAO

TRANSITION ALT 14 000  
TRANSITION LVL FL 140

DAEGU ACC 132.8  
INCHEON ACC 126.175  
SEOUL APP 119.75 121.35  
INCHEON TWR 118.2 118.8

SEOUL/Incheon Intl(RKSI)  
RWY 33L/R RWY 34L/R  
RNAV MAKSA 2M  
RNAV GONAV 3M

Note : Arrival under ICAO Flight Procedures.



Change : Information of reporting point(OLMEN, MAKSA, GONAV).

SEOUL/Incheon Intl(RKSI)  
RWY 33L/R RWY 34L/R  
RNAV GONAV 3M, RNAV MAKSA 2M

## AERONAUTICAL DATA TABULATION

Standard Instrument Arrival Procedure Coding Tables

RNAV GONAV 3M												
Serial Number	Path Descriptor	Waypoint Identifier	Fly-over	Course/Track °M(°T)	Distance (NM)	Turn direction	Altitude (ft)	Speed (kt)	Coordinates	VPA/TCH	Navigation specification	Remarks
001	IF	GONAV	-	-	-	-	-	-	37°10'48.4"N 124°24'52.6"E	-	RNAV 1	-
002	TF	BODOL	-	097 (088.3)	20.0	-	+FL 200	-	37°11'21.6"N 124°49'53.7"E	-	RNAV 1	-
003	TF	REBIT	-	097 (088.5)	31.4	-	+FL 170	-	37°12'03.0"N 125°29'12.7"E	-	RNAV 1	-
004	TF	BELTU	-	097 (088.9)	15.0	-	+FL 150	-	37°12'18.2"N 125°47'59.0"E	-	RNAV 1	-
005	TF	PE054	-	097 (089.1)	14.1	-	+13 000	-	37°12'30.7"N 126°05'34.8"E	-	RNAV 1	-
006	TF	PE048	-	098 (089.0)	6.3	-	+12 000	-	37°12'37.2"N 126°13'28.7"E	-	RNAV 1	-
007	TF	PE029	-	119 (110.2)	18.7	-	+8 500	-	37°06'06.2"N 126°35'26.7"E	-	RNAV 1	-
008	TF	ENPIL	-	070 (061.4)	7.4	-	+7 000	-	37°09'39.0"N 126°43'34.0"E	-	RNAV 1	IAF

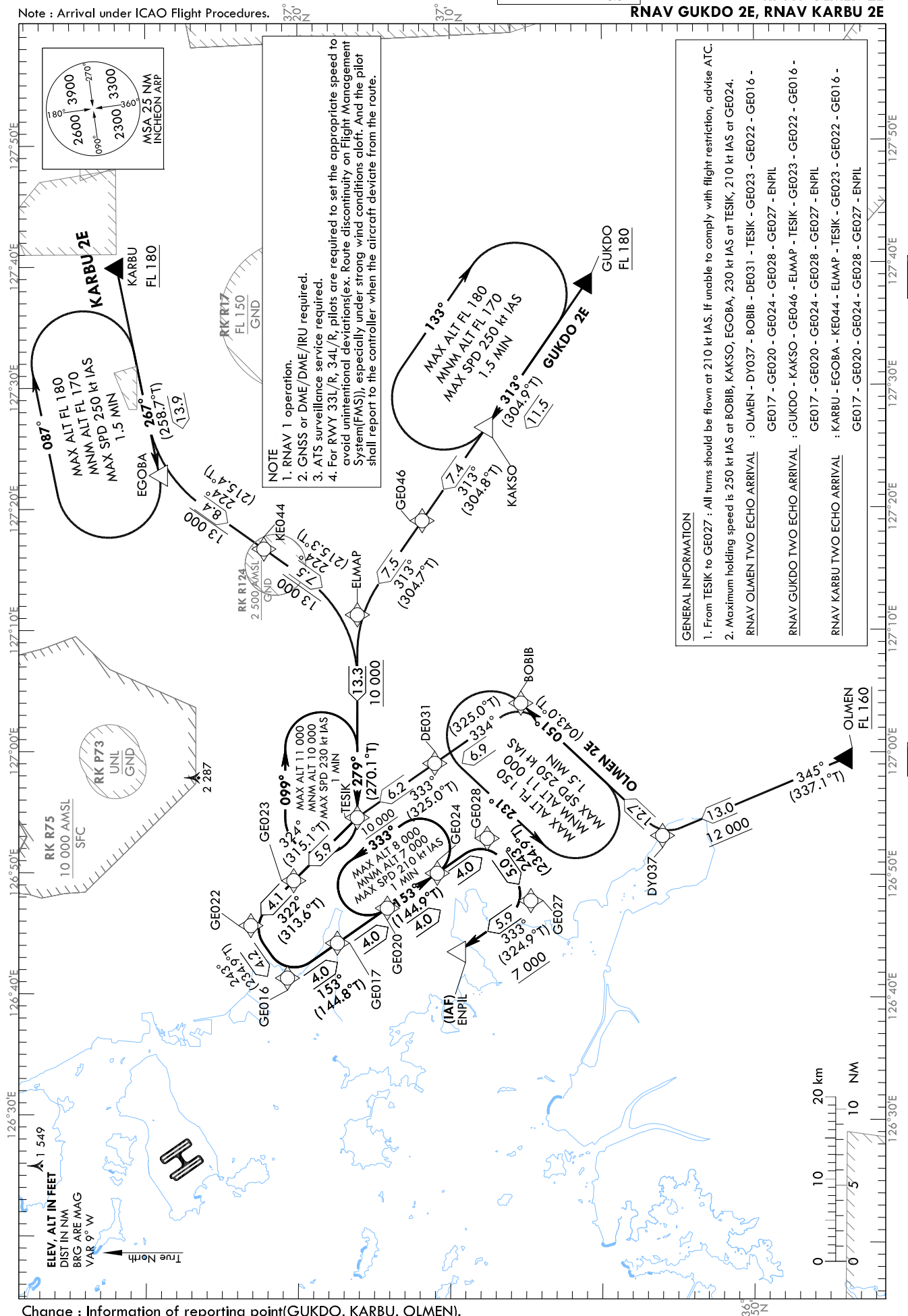
RNAV MAKSA 2M												
Serial Number	Path Descriptor	Waypoint Identifier	Fly-over	Course/Track °M(°T)	Distance (NM)	Turn direction	Altitude (ft)	Speed (kt)	Coordinates	VPA/TCH	Navigation specification	Remarks
001	IF	MAKSA	-	-	-	-	-	-	35°30'11.3"N 126°54'22.0"E	-	RNAV 1	-
002	TF	ATASO	-	013 (005.1)	23.6	-	+FL 220	-	35°53'43.6"N 126°56'57.0"E	-	RNAV 1	-
003	TF	PEBRI	-	013 (005.1)	29.5	-	+FL 180	-	36°23'10.8"N 127°00'13.3"E	-	RNAV 1	-
004	TF	OLMEN	-	007 (358.3)	21.0	-	+FL 150	-	36°44'13.4"N 126°59'27.6"E	-	RNAV 1	-
005	TF	DE030	-	342 (333.2)	20.4	-	+9 500	-	37°02'27.1"N 126°47'57.6"E	-	RNAV 1	-
006	TF	ENPIL	-	343 (334.0)	8.0	-	+7 000	-	37°09'39.0"N 126°43'34.0"E	-	RNAV 1	IAF

TRANSITION	ALT	14 000
TRANSITION	LVL	FL 140

SEOUL	APP	119.75
		121.35
INCHEON	TWR	118.2
		118.8

SEOUL/Incheon Intl(RKSI)  
RWY 33L/R, RWY 34L/R  
RNAV OLMEN 2E  
KDO 2E, RNAV KARBU 2E

**RNAV GUKDO 2E, RNAV KARBU 2E**



Change : Information of reporting point(GUKDO, KARBU, OLMEN).

SEOUL/Incheon Intl(RKSI)  
RWY 33L/R, RWY 34L/R  
RNAV OLMEN 2E

## AERONAUTICAL DATA TABULATION

Standard Instrument Arrival Procedure Coding Tables

RNAV OLMEN 2E													
Serial Number	Path Descriptor	Waypoint Identifier	Fly-over	Course/Track °M(°T)	Distance (NM)	Turn direction	Altitude (ft)	Speed (kt)	Coordinates	VPA/ TCH	Navigation specification	Remarks	
001	IF	OLMEN	-	-	-	-	+FL 160	-	36°44'13.4"N 126°59'27.6"E	-	RNAV 1	-	-
002	TF	DY037	-	345 (337.1)	13.0	-	+12 000	-	36°56'12.5"N 126°53'08.4"E	-	RNAV 1	-	-
003	TF	BO8IB	-	051 (043.0)	12.7	-	-	-250	37°05'31.6"N 127°03'59.2"E	-	RNAV 1	-	-
004	TF	DE031	-	334 (325.0)	6.9	-	-	-250	37°11'11.2"N 126°59'02.3"E	-	RNAV 1	-	-
005	TF	TESIK	-	333 (325.0)	6.2	-	+10 000	@210	37°16'16.6"N 126°54'34.5"E	-	RNAV 1	-	-
006	TF	GE023	-	324 (315.1)	5.9	-	-	@210	37°20'26.8"N 126°49'22.7"E	-	RNAV 1	-	-
007	TF	GE022	-	322 (313.6)	4.1	-	-	@210	37°23'15.5"N 126°45'40.4"E	-	RNAV 1	-	-
008	TF	GE016	-	243 (234.9)	4.2	-	-	@210	37°20'50.4"N 126°41'21.8"E	-	RNAV 1	-	-
009	TF	GE017	-	153 (144.8)	4.0	-	-	@210	37°17'33.9"N 126°44'15.1"E	-	RNAV 1	-	-
010	TF	GE020	-	153 (144.8)	4.0	-	-	@210	37°14'17.5"N 126°47'08.2"E	-	RNAV 1	-	-
011	TF	GE024	-	153 (144.9)	4.0	-	-	@210	37°11'00.9"N 126°50'01.0"E	-	RNAV 1	-	-
012	TF	GE028	-	153 (144.9)	4.0	-	-	@210	37°07'44.3"N 126°52'53.5"E	-	RNAV 1	-	-
013	TF	GE027	-	243 (234.9)	5.0	-	-	@210	37°04'51.6"N 126°47'46.7"E	-	RNAV 1	-	-
014	TF	ENPIL	-	333 (324.9)	5.9	-	+7 000	-	37°09'39.0"N 126°43'34.0"E	-	RNAV 1	-	IAF

SEOUL/Incheon Intl(RKSI)  
RWY 33L/R, RWY 34L/R  
RNAV GUKDO 2E

## AERONAUTICAL DATA TABULATION

## Standard Instrument Arrival Procedure Coding Tables

RNAV GUKDO 2E		Waypoint Identifier	Fly-over	Course/Track °M(°T)	Distance (NM)	Turn direction	Altitude (ft)	Speed (kt)	Coordinates	VPA/ TCH	Navigation specification	Remarks
Serial Number	Path Descriptor											
001	IF	GUKDO	-	-	-	-	+FL 180	-	37°01'10.9"N 127°38'22.9"E	-	RNAV 1	-
002	TF	KAKSO	-	313 (304.9)	11.5	-	-	-	37°07'44.6"N 127°26'37.4"E	-	RNAV 1	-
003	TF	GE046	-	313 (304.8)	7.4	-	-	-	37°11'59.6"N 127°18'58.3"E	-	RNAV 1	-
004	TF	ELMAP	-	313 (304.7)	7.5	-	-	-250	37°16'16.0"N 127°11'14.9"E	-	RNAV 1	-
005	TF	TESIK	-	279 (270.1)	13.3	-	+10 000	@210	37°16'16.6"N 126°54'34.5"E	-	RNAV 1	-
006	TF	GE023	-	324 (315.1)	5.9	-	-	@210	37°20'26.8"N 126°49'22.7"E	-	RNAV 1	-
007	TF	GE022	-	322 (313.6)	4.1	-	-	@210	37°23'15.5"N 126°45'40.4"E	-	RNAV 1	-
008	TF	GE016	-	243 (234.9)	4.2	-	-	@210	37°20'50.4"N 126°41'21.8"E	-	RNAV 1	-
009	TF	GE017	-	153 (144.8)	4.0	-	-	@210	37°17'33.9"N 126°44'15.1"E	-	RNAV 1	-
010	TF	GE020	-	153 (144.8)	4.0	-	-	@210	37°14'17.5"N 126°47'08.2"E	-	RNAV 1	-
011	TF	GE024	-	153 (144.9)	4.0	-	-	@210	37°11'00.9"N 126°50'01.0"E	-	RNAV 1	-
012	TF	GE028	-	153 (144.9)	4.0	-	-	@210	37°07'44.3"N 126°52'53.5"E	-	RNAV 1	-
013	TF	GE027	-	243 (234.9)	5.0	-	-	@210	37°04'51.6"N 126°47'46.7"E	-	RNAV 1	-
014	TF	ENPIL	-	333 (324.9)	5.9	-	+7 000	-	37°09'39.0"N 126°43'34.0"E	-	RNAV 1	IAF

SEOUL/Incheon Intl(RKSI)  
RWY 33L/R, RWY 34L/R  
RNAV KARBU 2E

## AERONAUTICAL DATA TABULATION

## Standard Instrument Arrival Procedure Coding Tables

RNAV KARBU 2E													
Serial Number	Path Descriptor	Waypoint Identifier	Fly-over	Course/Track (°M/T)	Distance (NM)	Turn direction	Altitude (ft)	Speed (kt)	Coordinates	VPA/TCH	Navigation specification	Remarks	
001	IF	KARBU	-	-	-	-	+FL 180	-	37°31'59.0"N 127°39'52.0"E	-	RNAV 1	-	-
002	TF	EGOBA	-	267 (258.7)	13.9	-	-	-	37°29'14.7"N 127°22'45.9"E	-	RNAV 1	-	-
003	TF	KE044	-	224 (215.4)	8.4	-	+13 000	-	37°22'23.8"N 127°16'40.7"E	-	RNAV 1	-	-
004	TF	ELMAP	-	224 (215.3)	7.5	-	+13 000	-250	37°16'16.0"N 127°11'4.9"E	-	RNAV 1	-	-
005	TF	TESIK	-	279 (270.1)	13.3	-	+10 000	@210	37°16'16.6"N 126°54'34.5"E	-	RNAV 1	-	-
006	TF	GE023	-	324 (315.1)	5.9	-	-	@210	37°20'26.8"N 126°49'22.7"E	-	RNAV 1	-	-
007	TF	GE022	-	322 (313.6)	4.1	-	-	@210	37°23'15.5"N 126°45'40.4"E	-	RNAV 1	-	-
008	TF	GE016	-	243 (234.9)	4.2	-	-	@210	37°20'50.4"N 126°41'21.8"E	-	RNAV 1	-	-
009	TF	GE017	-	153 (144.8)	4.0	-	-	@210	37°17'33.9"N 126°44'15.1"E	-	RNAV 1	-	-
010	TF	GE020	-	153 (144.8)	4.0	-	-	@210	37°14'17.5"N 126°47'08.2"E	-	RNAV 1	-	-
011	TF	GE024	-	153 (144.9)	4.0	-	-	@210	37°11'00.9"N 126°50'01.0"E	-	RNAV 1	-	-
012	TF	GE028	-	153 (144.9)	4.0	-	-	@210	37°07'44.3"N 126°52'53.5"E	-	RNAV 1	-	-
013	TF	GE027	-	243 (234.9)	5.0	-	-	@210	37°04'51.6"N 126°47'46.7"E	-	RNAV 1	-	-
014	TF	ENPIL	-	333 (324.9)	5.9	-	+7 000	-	37°09'39.0"N 126°43'34.0"E	-	RNAV 1	-	IAF

## HOLDING PROCEDURE

Holding Identification	Path Descriptor	Waypoint Identifier	Fly-over	Course/Track (°M/T)	Time (min)	Turn direction	Altitude (ft)	Speed (kt)	Coordinates	VPA/TCH	Navigation specification	Remarks
RNAV OLMEN 2E	-	BOBIB	Y	051 (043.0)	1.5	L	-FL 150 +11 000	-250	37°05'31.6"N 127°03'59.2"E	-	RNAV 1	-
RNAV GUKDO 2E	-	KAKSO	Y	313 (304.9)	1.5	R	-FL 180 +FL 170	-250	37°07'44.6"N 127°26'37.4"E	-	RNAV 1	-
RNAV KARBU 2E	-	EGOBA	Y	267 (258.7)	1.5	R	-FL 180 +FL 170	-250	37°29'14.7"N 127°22'45.9"E	-	RNAV 1	-
RNAV GUKDO 2E	-	TESIK	Y	279 (270.1)	1.0	R	-11 000 +10 000	-230	37°16'16.6"N 126°54'34.5"E	-	RNAV 1	-
ALL PROCEDURE	-	GE024	Y	153 (144.9)	1.0	L	-8 000 +7 000	-210	37°11'00.9"N 126°50'01.0"E	-	RNAV 1	-

Change : Information of ALT restriction for holding procedure.

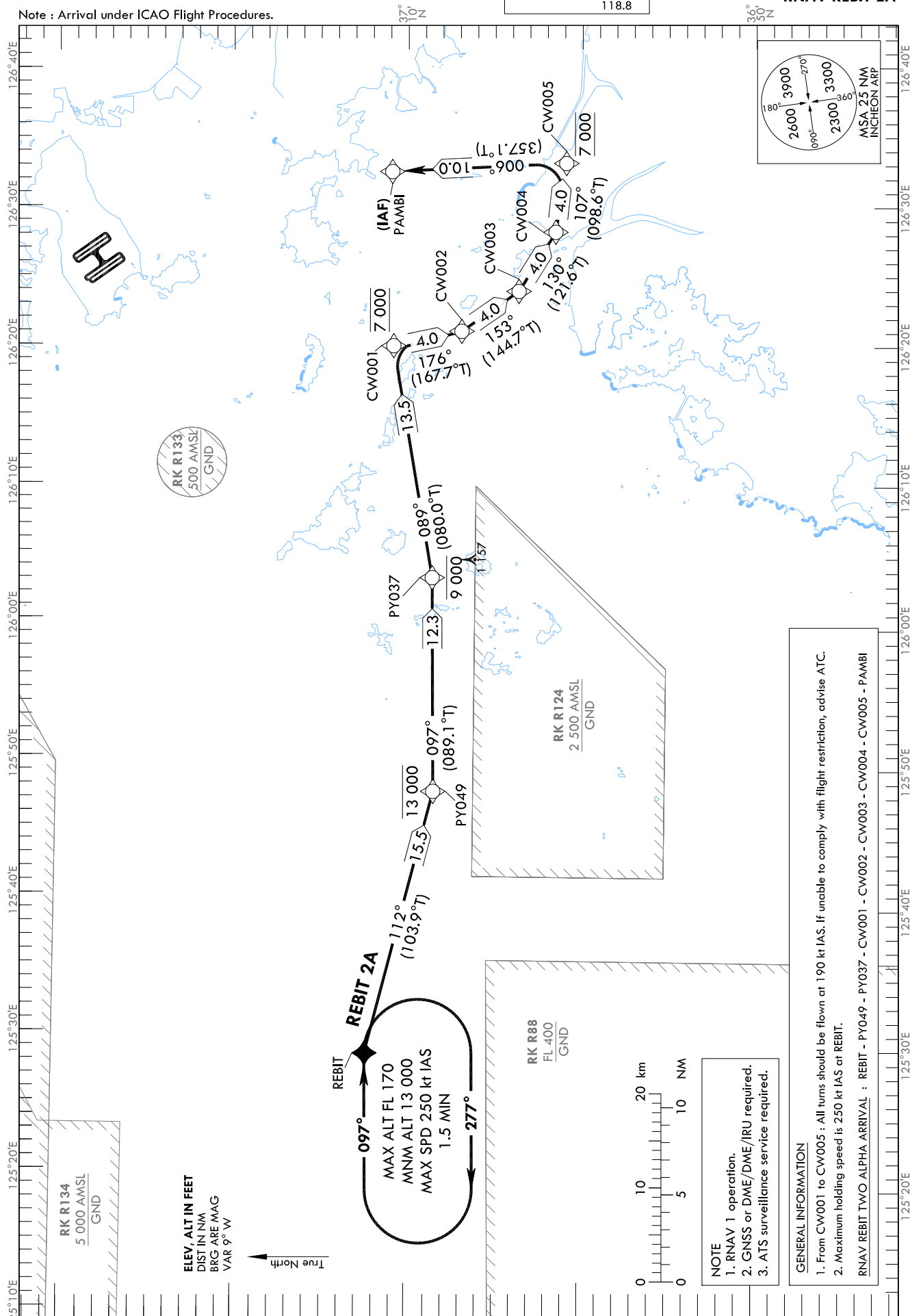
## STANDARD ARRIVAL CHART INSTRUMENT (STAR) - ICAO

TRANSITION	ALT	14 000
TRANSITION	LVL	FL 140

SEOUL	APP	119.75
		121.35
INCHEON	TWR	118.2
		118.8

**SEOUL/Incheon Intl(RKSI)  
RWY 33L/R, RWY 34L/R  
RNAV REBIT 2A**

Note : Arrival under ICAO Flight Procedures.



Change : Information of reporting point(REBIT).

AERONAUTICAL DATA TABULATION

Standard Instrument Arrival Procedure Coding Tables

RNAV REBIT 2A										
Serial Number	Path Descriptor	Waypoint Identifier	Fly-over	Course/Track °M(°T)	Distance (NM)	Turn direction	Altitude (ft)	Speed (kt)	Coordinates	VPA/TCH
001	IF	REBIT	-	-	-	-	-	-	37°12'03.0"N 125°29'12.7"E	-
002	TF	PY049	-	112 (103.9)	15.5	-	-13 000	-	37°08'17.9"N 125°48'04.6"E	-
003	TF	PY037	-	097 (089.1)	12.3	-	-9 000	-	37°08'28.1"N 126°03'25.2"E	-
004	TF	CW001	-	089 (080.0)	13.5	-	@7 000	@190	37°10'47.3"N 126°20'03.6"E	-
005	TF	CW002	-	176 (167.7)	4.0	-	@7 000	@190	37°06'52.4"N 126°21'07.4"E	-
006	TF	CW003	-	153 (144.7)	4.0	-	@7 000	@190	37°03'36.4"N 126°24'00.8"E	-
007	TF	CW004	-	130 (121.6)	4.0	-	@7 000	@190	37°01'30.3"N 126°28'16.0"E	-
008	TF	CW005	-	107 (098.6)	4.0	-	@7 000	@190	37°00'54.3"N 126°33'12.3"E	-
009	TF	PAMBI	-	006 (357.1)	10.0	-	-	-	37°10'54.3"N 126°32'34.4"E	-
										IAF

HOLDING PROCEDURE						
Holding Identification	Path Descriptor	Waypoint Identifier	Fly-over	Course/Track °M(°T)	Time (min)	Turn direction
RNAV REBIT 2A	-	REBIT	Y	097 (089.1)	1.5	R
					Altitude (ft)	Speed (kt)
					-FL 170	-250
					+13 000	
					Coordinates	VPA/TCH
					37°12'03.0"N 125°29'12.7"E	-
					Navigation specification	Remarks
					RNAV 1	-